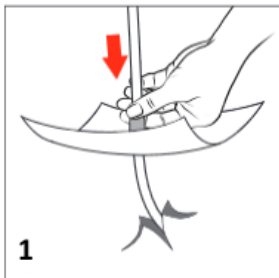


# Processing Instructions

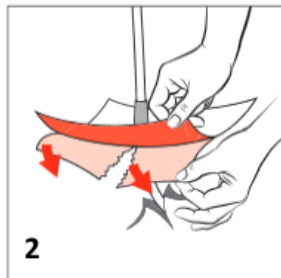
## RadonTec AlphaColl

- The surface must be dry, load-bearing and free of dust and release agents.
- Wrinkles and creases must be avoided.
- The diameter of the selected sleeve must have the appropriate dimension for the cable bushing.
- It is recommended to store the sleeves in a cool place until shortly before use so that the protective film can be easily removed.

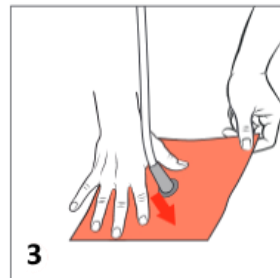
### Cable Collars



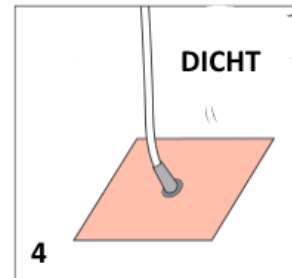
Pull the sleeve over the pipe.



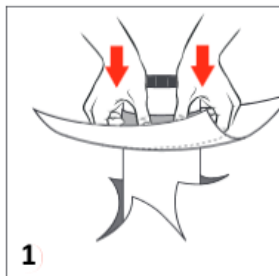
Remove protective foil.



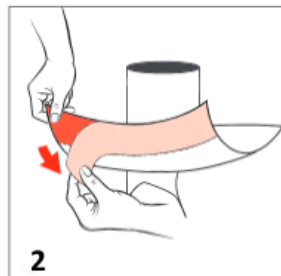
Press adhesive collar firmly into place.



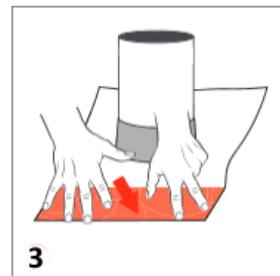
### Pipe collars



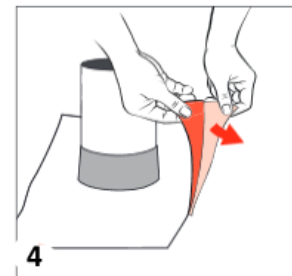
Pull the sleeve over the pipe.



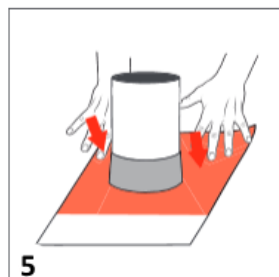
Pull off the upper part of the protective film.



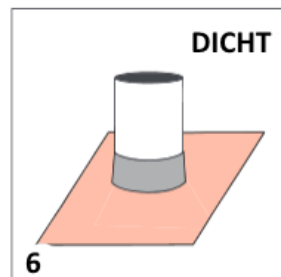
Firmly press on the upper part of the adhesive collar.



Peel off the lower part of the protective film.



Press the lower part of the protective foil firmly.



The information in these assembly instructions is given to the best of our knowledge, based on the results of practical experience and tests carried out. Check for yourself whether the product is suitable for your purposes. No one is authorized to give recommendations or assurances on our behalf that go beyond the contents of our information sheets. We reserve the right to make changes as well as further development of the products.