

**Radon FTlab – FRD400**  
**PC installed Program Manual V1.3**



**FTLab Co. Ltd,**  
Email. [sales@ftlab.kr](mailto:sales@ftlab.kr)

## Table of Contents

### A. Main Screen (Operation tab)

- a. Display
- b. Control
- c. Menu
- d. Parameter Setup Screen

### B. Main Screen (Log View tab)

- a. Data log table & Update
- b. Log file Viewer

## Software Description

### Description

- This information is written for the purpose of FRD (Fast Radon Detector) series PC software operating instruction

### System Requirements

- OS: windows XP, windows Server 2008, windows Vista
- Microsoft internet explorer 6.0 service pack1 or more
- CPU: 1GHz or more
- RAM: 256MB or more
- HDD: 610MB or more

### PC Operating Software download

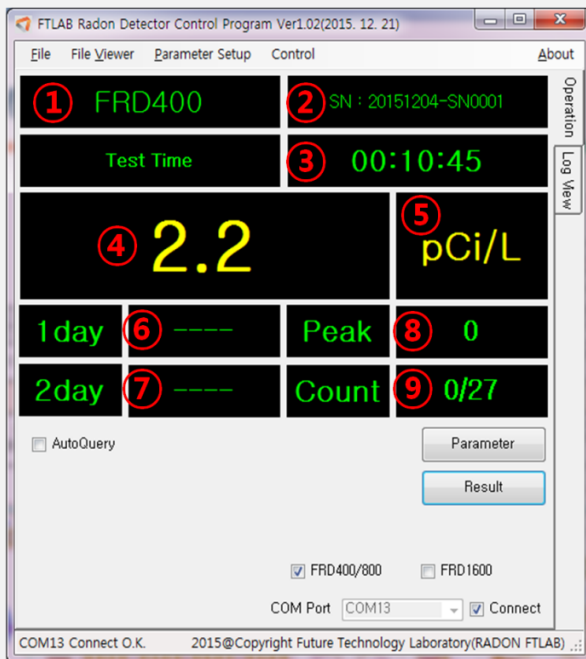
- <http://radonflab.com/download/>

### Error Handling

- <http://radonflab.com/contact/>

## A. Main Screen (Operation tab)

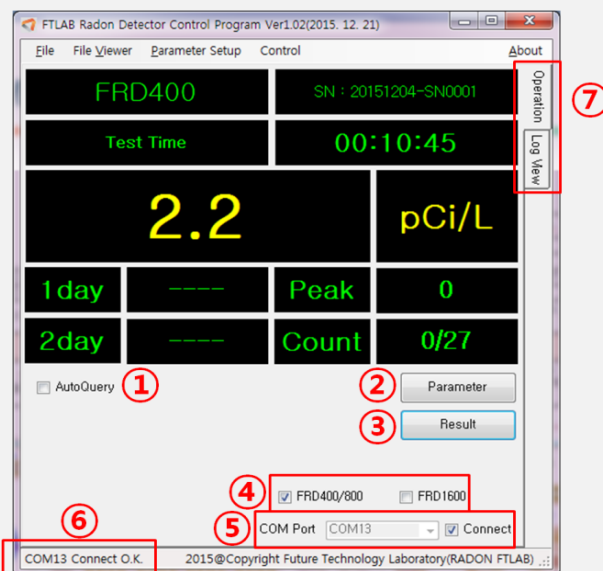
### a. Display



1. Model name
2. Serial number
3. Measurement period
4. Radon Value (Lately Measured)
5. Unit (pCi/L or Bq/m3)
6. Daily mean value(Latest)
7. 2days mean Value
8. Daily maximum Value(Latest)
9. Lately measured pulse count / Measured pulse count 1step

before

### b. Control

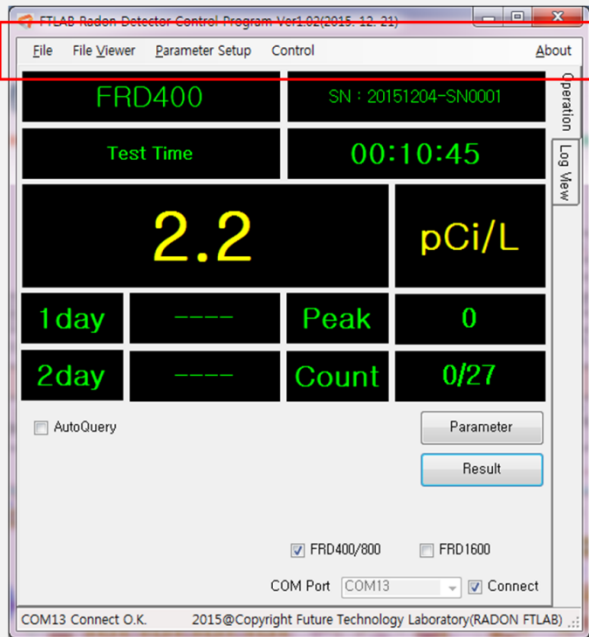


1. 'Check' then display will be refreshed every 5minutes
2. Button for device identification
3. Button for current value identify
4. Device model selection
5. Select usable Com port and check The 'Connect' for communication available
6. Device connection status

### 7. Tab selection

- Operation: Measurement value and device information (Please refer A.)
- Log View: Recorded log table identification on device (Please refer B.)

### c. Menu



#### 1. File

- Open: Recorded log file open
- Exit

#### 2. File Viewer

- Graph viewer window open

#### 3. Parameter Setup

- Measurement parameter setup

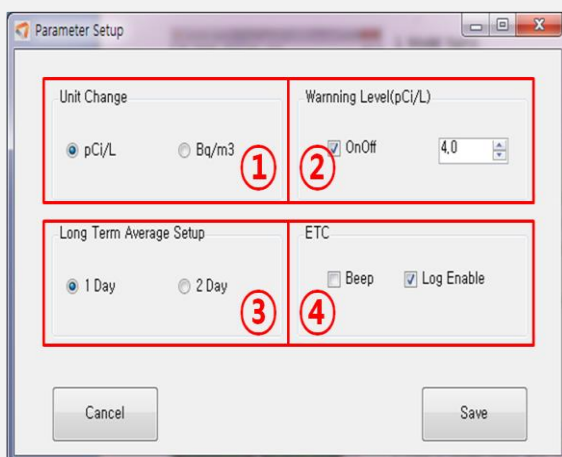
#### 4. Control

- Device parameter communication

#### 5. About

- Program information

### d. Parameter Setup Screen



#### 1. Measurement unit selection

#### 2. Buzz warning level selection

#### 3. Long term average setup

- Value display internal

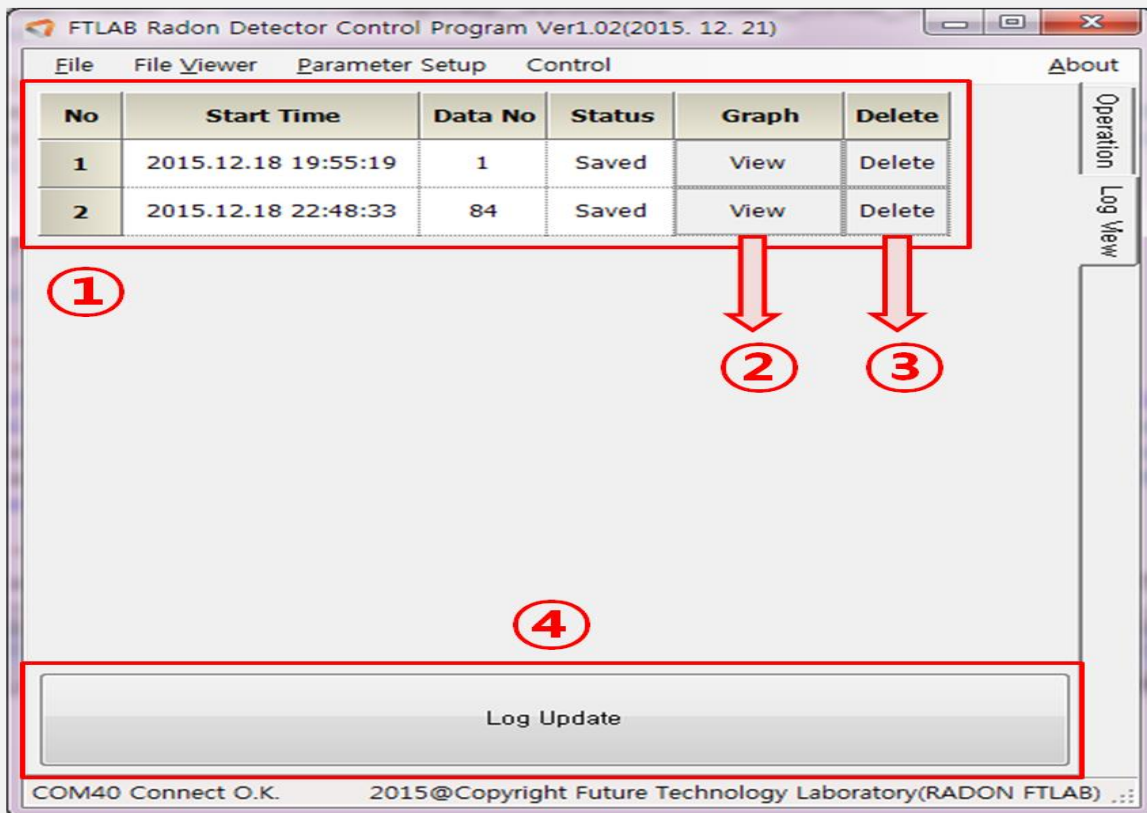
#### 4. ETC

- Beep: operation sound effect

- Log Enable: Data recording

## B. Main Screen ('Log View' tab)

### a. data log table& update



#### 1. Log Table

- Recorded log data list on device
- Displaying the Data logging time, Data count, Recording status

#### 2. View Button (Please refer to the 'B.b\_Lof file viewer')

- Click the button then selected row's graph window will be pop up

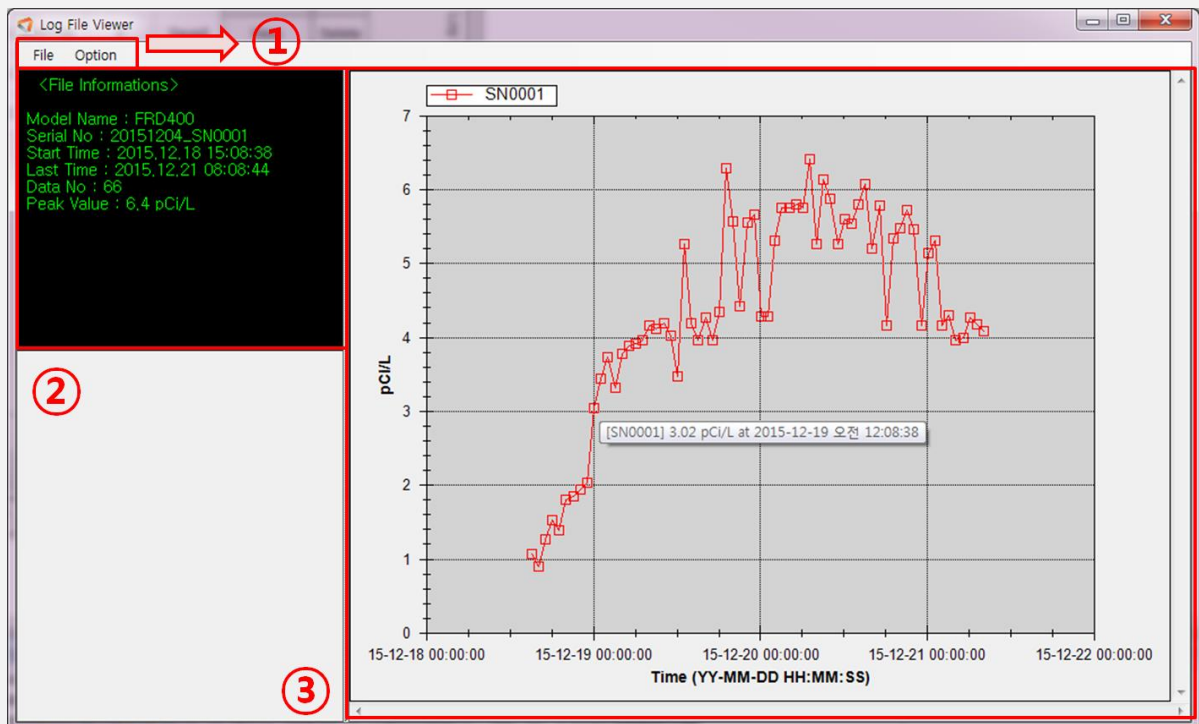
#### 3. Delete Button

- Click the button then selected data will be removed

#### 4. Log Update

- Click the button then the current device log data will be transferred to PC

## b. Log File Viewer



- Pop up window when you open the data file or click the B.a.2 View button

### 1. Menu

- Open: Log file open which saved on PC
- Save As: Recording the log file on PC
- Close: Closing the 'Log File Viewer'

### 2. File information

- Current Log File's information
- Item: Model Name, SN, Start Time, Last Time, Data No., Peak Value

### 3. Graph

- Displaying the current log file value
- X axis: Measurement time, Y axis: Measured data
- When moving the mouse point on the graph then you can see the data value